

# **MATLAB<sup>®</sup> Report Generator<sup>™</sup>**

## **Release Notes**

---

## How to Contact MathWorks



[www.mathworks.com](http://www.mathworks.com) Web  
[comp.soft-sys.matlab](mailto:comp.soft-sys.matlab) Newsgroup  
[www.mathworks.com/contact\\_TS.html](http://www.mathworks.com/contact_TS.html) Technical Support



[suggest@mathworks.com](mailto:suggest@mathworks.com) Product enhancement suggestions  
[bugs@mathworks.com](mailto:bugs@mathworks.com) Bug reports  
[doc@mathworks.com](mailto:doc@mathworks.com) Documentation error reports  
[service@mathworks.com](mailto:service@mathworks.com) Order status, license renewals, passcodes  
[info@mathworks.com](mailto:info@mathworks.com) Sales, pricing, and general information



508-647-7000 (Phone)



508-647-7001 (Fax)



The MathWorks, Inc.  
3 Apple Hill Drive  
Natick, MA 01760-2098

For contact information about worldwide offices, see the MathWorks Web site.

*MATLAB® Report Generator™ Release Notes*

© COPYRIGHT 2002–2014 by The MathWorks, Inc.

The software described in this document is furnished under a license agreement. The software may be used or copied only under the terms of the license agreement. No part of this manual may be photocopied or reproduced in any form without prior written consent from The MathWorks, Inc.

FEDERAL ACQUISITION: This provision applies to all acquisitions of the Program and Documentation by, for, or through the federal government of the United States. By accepting delivery of the Program or Documentation, the government hereby agrees that this software or documentation qualifies as commercial computer software or commercial computer software documentation as such terms are used or defined in FAR 12.212, DFARS Part 227.72, and DFARS 252.227-7014. Accordingly, the terms and conditions of this Agreement and only those rights specified in this Agreement, shall pertain to and govern the use, modification, reproduction, release, performance, display, and disclosure of the Program and Documentation by the federal government (or other entity acquiring for or through the federal government) and shall supersede any conflicting contractual terms or conditions. If this License fails to meet the government's needs or is inconsistent in any respect with federal procurement law, the government agrees to return the Program and Documentation, unused, to The MathWorks, Inc.

### Trademarks

MATLAB and Simulink are registered trademarks of The MathWorks, Inc. See [www.mathworks.com/trademarks](http://www.mathworks.com/trademarks) for a list of additional trademarks. Other product or brand names may be trademarks or registered trademarks of their respective holders.

### Patents

MathWorks products are protected by one or more U.S. patents. Please see [www.mathworks.com/patents](http://www.mathworks.com/patents) for more information.

---

## **R2014a**

OpenOffice support .....	2
--------------------------	---

---

## **R2013b**

Bug Fixes	
-----------	--

---

## **R2013a**

Bug Fixes	
-----------	--

---

## **R2012b**

Non-English character set report formats .....	8
------------------------------------------------	---

---

## **R2012a**

Enhanced Table Components .....	10
Title Page Formatting Enhancements .....	11
Text Component Supports Subscripts and Superscripts ..	11

---

## **R2011b**

Full Page Image Option for PDF Reports .....	14
----------------------------------------------	----

Include Legal Notice, Report Creation Date, and Copyright on the Title Page .....	14
--------------------------------------------------------------------------------------	----

### **R2011a**

Improved PDF Pagination .....	16
Export XML Comparison Results to the Workspace .....	16

### **R2010b**

Complete Text Included in Reports .....	18
Linking to MATLAB Commands .....	18
Insert Variable Component Enhancements .....	18
Nest Setup File Component Supports Relative Links .....	18
Enhanced Error Handling Code for Evaluate MATLAB Expression Component .....	18
Transposable Columns for Handle Graphics Summary Table Component .....	18
Additional Date Format for Title Page Component .....	19
Improved XML Comparison Report .....	19

### **R2010a**

Bug Fixes

### **R2009b**

Stylesheets and Stylesheet Data Items Now Alphabetized .....	24
Improved Images in Word and RTF Reports on Windows Platforms .....	24
Required Products Information for MATLAB/Toolbox Version Number Component .....	24

Adobe Illustrator Image File Format No Longer Supported .....	25
Navigation Controls for XML Comparison Report .....	25

**R2009a**

No New Features or Changes

**R2008b+**

Comparison of XML Files .....	30
-------------------------------	----

**R2008b**

Bug Fixes

**R2008a**

Bug Fixes

**R2007b**

Text Formatting Options for Title Page, Text, and Paragraph Components .....	36
------------------------------------------------------------------------------	----

**R2007a**

Bug Fixes

**R2006b**

Bug Fixes

**R2006a+**

Bug Fixes

**R2006a**

User Interface and Performance Enhanced .....	44
XML File Format Changed .....	44

**R14SP3**

Stylesheets Modify PDF Headers and Footers .....	46
--------------------------------------------------	----

**R14SP2+**

Stylesheet Editor .....	48
Table Cell Spanning .....	48
Generating Microsoft Word Documents as .doc Files .....	48
Improved Graphical User Interface .....	49

# R2014a

---

**Version: 3.16**

**New Features: Yes**

**Bug Fixes: Yes**

## OpenOffice support

On Linux® and Macintosh platforms, the report output appears in Apache OpenOffice if you:

- Set **File format** to either Word Document (RTF) or Rich Text Format
- Enable **View report generation**

In the MATLAB® Report Generator™ Preferences, the **View command** preference default now enables viewing the report in OpenOffice for Linux and Macintosh platforms.

For details, see “Report Output Format and Stylesheet”.



# R2013b

---

**Version: 3.15**

**New Features: No**

**Bug Fixes: Yes**



# R2013a

---

**Version: 3.14**

**New Features: No**

**Bug Fixes: Yes**



# R2012b

---

**Version: 3.13**

**New Features: No**

**Bug Fixes: Yes**

## **Non-English character set report formats**

The MATLAB Report Generator provides basic PDF font support for:

- English
- Japanese
- Korean
- Russian (Cyrillic)

You can use the language font map to:

- Add or modify specifications for PDF font usage for supported non-English languages.
- Create PDF font support for a non-supported language.
- Change the default English fonts, if you do not specify a stylesheet.

The language font map specifications indicate what font to use on a specific platform (for example, Windows®) for basic report elements such as body text. For details, see PDF Fonts for Non-English Platforms.

# R2012a

---

**Version: 3.12**

**New Features: Yes**

**Bug Fixes: Yes**

## Enhanced Table Components

### Compatibility Considerations: Yes

You can use the following new components to create and format a table:

- Table
- Table Column Specification
- Table Header
- Table Body
- Table Footer
- Table Row
- Table Entry

Formatting options that the Table component and its child components support include:

- Text color and alignment
- Row background colors
- Inclusion of images
- Inclusion of hyperlinks
- Table cells spanning columns and rows

You can conditionally control the content or format of a table.

For more information, see [Table Formatting Components](#).

### Compatibility Considerations

Releases earlier than R2012a included a different Table component. Starting in R2012a, that component is now called the `Array-Based Table` component.

The `Array-Based Table` component produces the same output, and has the same properties, as it did when it was called the `Table` component. The



Array-Based Table component converts a rectangular array into a table and inserts the table into the report.

If a report that was created in a previous release already includes a Table component, the output is the same as in previous releases. To change property values for that component in R2012a or later, use the Array-Based Table dialog box.

## **Title Page Formatting Enhancements**

For PDF and HTML reports, you can use the Stylesheet Editor to position title page elements (for example, title, copyright, and images) anywhere on the front or reverse side of the title page in any order. You can specify the size, color, weight, and slant of text elements.

For details, see [Modify Title Page Properties](#).

## **Text Component Supports Subscripts and Superscripts**

You can include a subscript or superscript in a paragraph, using a Text component.



# R2011b

---

**Version: 3.11**

**New Features: Yes**

**Bug Fixes: Yes**

## Full Page Image Option for PDF Reports

To display full-page images in PDF reports, set the **Paper orientation** property to the new **Full page image (PDF only)** option. The following components provide this new option:

- Axes Snapshot
- Figure Snapshot

The Image component has a **Full page image (PDF only)** check box, which provides the same functionality as the **Full page image (PDF only)** property option.

## Include Legal Notice, Report Creation Date, and Copyright on the Title Page

The Title Page component includes a new **Display legal notice on title page** check box. Use this option to include the legal notice, report creation date, and copyright information on the title page of reports that use PDF or Microsoft® Word format.

# R2011a

---

**Version: 3.10**

**New Features: Yes**

**Bug Fixes: Yes**

## Improved PDF Pagination

Reports generated using PDF output format produce better pagination, including:

- Section titles are on the same page as the associated text (now section titles cannot appear as orphans at the bottom of a page).
- Captions are on the same page as their associated images.

## Export XML Comparison Results to the Workspace

You can now export XML comparison results to the MATLAB base workspace. You can use the results data for tasks such as further analysis or incorporating into different reports.

For details, see [Export Results to the Workspace](#) in the MATLAB Report Generator User's Guide.

# R2010b

---

**Version: 3.9**

**New Features: Yes**

**Bug Fixes: Yes**

## Complete Text Included in Reports

Any component that displays text in reports now displays the whole text, without any truncation.

## Linking to MATLAB Commands

Using the `Link` component, in a report you can now include a link that executes a MATLAB command.

## Insert Variable Component Enhancements

The `Insert Variable` component includes several new options for specifying the content that the component displays and the table layout that the component uses.

## Nest Setup File Component Supports Relative Links

The `Nest Setup File` component includes a new **Link to external report is relative** option, which makes the link to the nested report a relative link. This feature facilitates including a report on a Web site.

## Enhanced Error Handling Code for Evaluate MATLAB Expression Component

The `Evaluate MATLAB Expression` component includes enhanced error handling code that you can easily customize (for example, the error handling code can stop report generation, with or without displaying an exception). The default error handling code now supports MATLAB class exception handling, using the `evalException` variable instead of `lastError`.

## Transposable Columns for Handle Graphics Summary Table Component

For the `Handle Graphics Summary Table` component, use the new **Transpose table** check box to change the summary table rows into columns



in the generated report. Specifying this option puts the property names in the first column and the values in the other columns.

## **Additional Date Format for Title Page Component**

The `Title Page` component includes an additional date format for the **Include report creation date** field: `yyyy/mm/dd`.

## **Improved XML Comparison Report**

Reports for comparisons of XML files have a new faster user interface, with changed parameters displayed in a separate panel for easier review. The enhanced report now has color highlighting for new and changed items.

For details, see [Explore the XML Comparison Report in the MATLAB Report Generator User's Guide](#).



# R2010a

---

**Version: 3.8**

**New Features: No**

**Bug Fixes: Yes**



# R2009b

---

**Version: 3.7**

**New Features: Yes**

**Bug Fixes: Yes**

## **Stylesheets and Stylesheet Data Items Now Alphabetized**

### **Compatibility Considerations: Yes**

When you create or modify a stylesheet, the Report Explorer **Options** pane now alphabetically sorts the stylesheets and the data items in each stylesheet category.

### **Compatibility Considerations**

The order in which a stylesheet or data item appears in a list may have changed from the order used in previous releases.

## **Improved Images in Word and RTF Reports on Windows Platforms**

### **Compatibility Considerations: Yes**

To provide better graphics quality in reports using the Word document format or RTF (Rich Text format) on Windows platforms, the default format for Handle Graphics® images is now Windows metafile format. The default had been black and white TIFF.

You can control the image format using the MATLAB preferences or the MATLAB Report Generator preferences, or from snapshot components such as the Axes Snapshot component.

### **Compatibility Considerations**

To change the image format back to the previous default of black and white TIFF, change the preferences.

## **Required Products Information for MATLAB/Toolbox Version Number Component**

The MATLAB/Toolbox Version Number component now supports options to display information based on whether a Simulink model or Stateflow chart

requires a MathWorks™ product. This feature does not apply to reports on MATLAB or toolbox code.

## **Adobe Illustrator Image File Format No Longer Supported**

**Compatibility Considerations: Yes**

### **Compatibility Considerations**

The **Image file format** options for the Axes Snapshot and the Figure Snapshot components no longer include Adobe® Illustrator. If you wish to integrate a MATLAB Report Generator image into Adobe Illustrator, specify a image file format supported by Adobe Illustrator, such as PDF, and then open the image file in Adobe Illustrator.

### **Navigation Controls for XML Comparison Report**

The XML comparison report has new navigation controls to step through differences in the report. You can use the toolbar buttons or the **XML** menu to move to the next or previous group of changes.

For details, see [Explore the XML Comparison Report in the MATLAB Report Generator User's Guide](#).





# R2009a

---

**Version: 3.6**

**New Features: No**

**Bug Fixes: No**

**No New Features or Changes**



# R2008b+

---

**Version: 3.5**

**New Features: Yes**

**Bug Fixes: Yes**

## Comparison of XML Files

New comparison report for pairs of XML files.

For details, see [Comparing XML Files in the MATLAB Report Generator documentation](#).

See also the following new example: `m1xml_testplan`.

# R2008b

---

**Version: 3.4**

**New Features: No**

**Bug Fixes: Yes**



# R2008a

---

**Version: 3.3**

**New Features: No**

**Bug Fixes: Yes**





# R2007b

---

**Version: 3.2.1**

**New Features: Yes**

**Bug Fixes: Yes**

## **Text Formatting Options for Title Page, Text, and Paragraph Components**

This release includes new text formatting options for the Title Page, Text, and Paragraph components.

For more information, see the MATLAB Report Generator documentation.

# R2007a

---

**Version: 3.2**

**New Features: No**

**Bug Fixes: Yes**



# R2006b

---

**Version: 3.1**

**New Features: No**

**Bug Fixes: Yes**



# R2006a+

---

**Version: 3.0.1**

**New Features: No**

**Bug Fixes: Yes**





# R2006a

---

**Version: 3.0**

**New Features: Yes**

**Bug Fixes: Yes**

## **User Interface and Performance Enhanced**

The Report Explorer interface has a number of enhancements. The **View** menu has commands to increase and decrease font size and to show the message window if it is not displayed.

MATLAB Report Generator performance has improved. Reports are often generated more rapidly and with less chance of running out of memory.

## **XML File Format Changed**

**Compatibility Considerations: Yes**

The format of XML files has changed in V3.0 (R2006a).

### **Compatibility Considerations**

In V3.0 (R2006a), Report Explorer and the `rptconvert` command can convert XML files produced by the report generation process in V2.3.1 (R14SP3) and previous versions. However, in V2.3.1 (R14SP3) and previous versions, Report Explorer and the `rptconvert` command cannot convert XML files produced by the report generation process in V3.0 (R2006a).

# R14SP3

---

**Version: 2.3.1**

**New Features: Yes**

**Bug Fixes: Yes**

## Stylesheets Modify PDF Headers and Footers

This release adds support for modifying the content of headers and footers in PDF reports. This feature is implemented using stylesheet cells and cell groups. A *cell group* contains one or more stylesheet cells. A *stylesheet cell* is a set of values that determine the content of a particular portion of the header or footer for a page.

Two cell groups, **Header Content** and **Footer Content**, are available for PDF reports. You can use templates to specify XML code that defines the content for a header or footer.

# R14SP2+

---

**Version: 2.3**

**New Features: Yes**

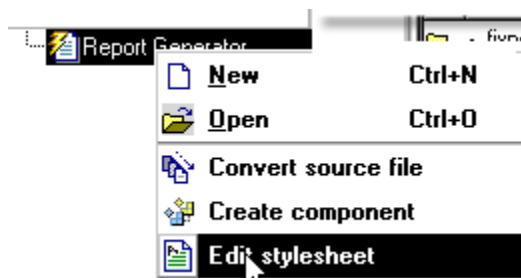
**Bug Fixes: Yes**

## Stylesheet Editor

You can use the Stylesheet Editor to customize the formatting of your HTML, PDF, and Word documents. For example, you can specify fonts, paper layout, table presentation, as well as other characteristics of your final report.

Customizing reports by editing stylesheets gives you the flexibility to create reports that conform to corporate style guidelines and requirements.

To open the Stylesheet Editor, right-click **Report Generator** in the Outline pane of the Report Explorer and then click **Edit Stylesheet** on the shortcut menu, as shown:



For more information about using the Stylesheet Editor, see [Create Custom Stylesheets](#) in the MATLAB Report Generator documentation.

## Table Cell Spanning

You can create advanced table layouts for property tables. The advanced layouts include cells that span multiple rows or columns.

## Generating Microsoft Word Documents as .doc Files

You can generate reports that are saved as Microsoft Word documents with the .doc extension. You can also convert XML source files that are generated by the report generation process to .doc files.

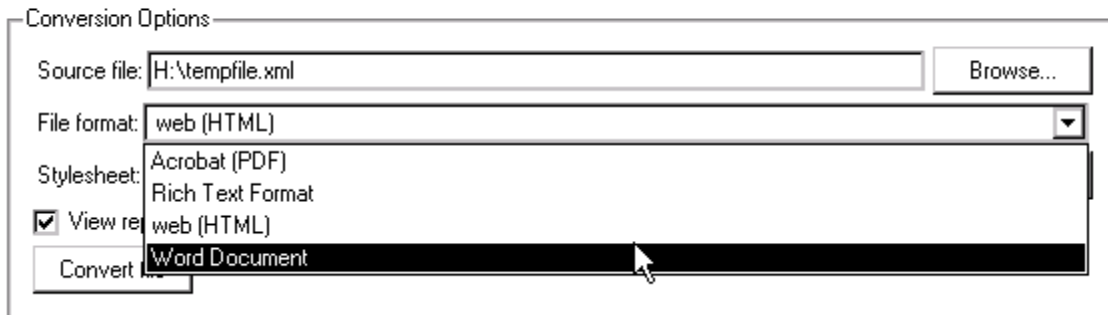
The reports you create are easier to distribute via e-mail, to share with others, and to manage.

You must have Microsoft Word software installed to use this feature, and you must be running the MATLAB Report Generator software on a Microsoft Windows system.

To use this feature select **Word Document** from the **Stylesheet** drop-down list in the Convert Source File dialog box, as shown:

### Convert Source File

The Source File Converter transforms DocBook XML source files created by the Report Generator into a formatted document, such as HTML, RTF, or PDF.



## Improved Graphical User Interface

This version of the MATLAB Report Generator software has the following changes and improvements to the graphical user interface:

- The File Converter has a **Source File** drop-down list. Click **Browse** to navigate to a folder to select a source file. The default folder is the current folder.
- In the File Converter, you can select a stylesheet from the drop-down list and click **Edit** to open the Stylesheet Editor.
- An improved mechanism detects and displays errors that occur when you attempt to add a component that makes the style hierarchy invalid. Users of earlier versions may notice that warnings are now issued for components that had no problems in earlier versions. In this release, warning messages contain instructions about how to fix the problem.

- The Figure Screen Capture component has been improved to capture window decorations such as menus, title bars, and toolbars.